



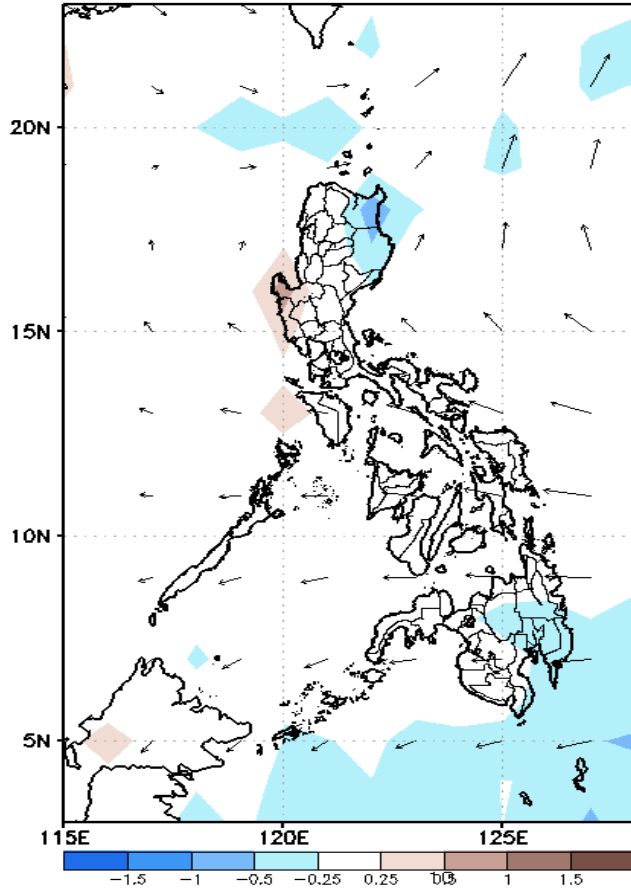
Week 1 & Week 2 Forecast for the Philippines using GEFS Model



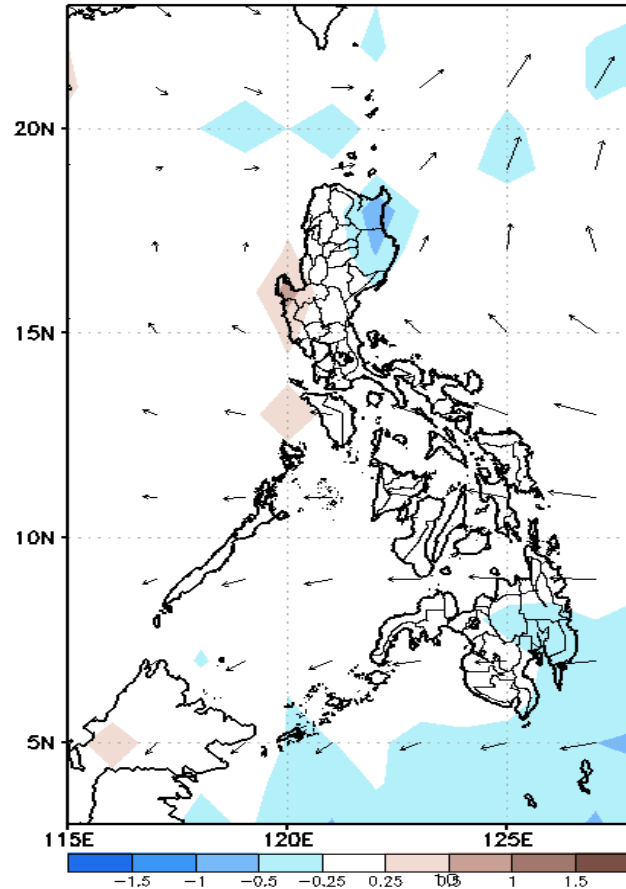
GEFS Week-1 Forecasts: Divergence & Wind Anomaly

Week 1: Sep 10-18, 2021

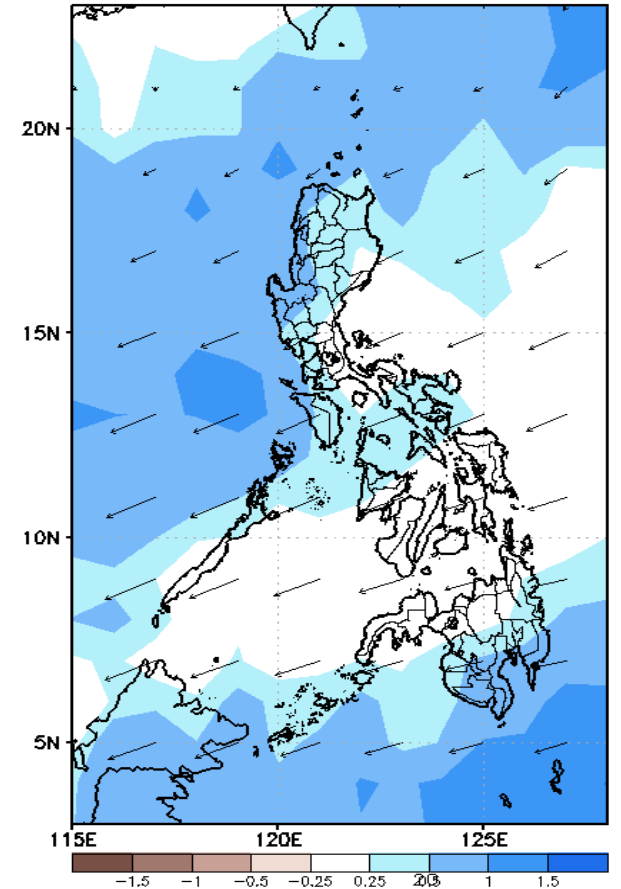
GEFS Week-1 850-hPa Divergence and Wind Anom
Valid: 20210910 - 20210916



GEFS Week-1 700-hPa Divergence and Wind Anom
Valid: 20210910 - 20210916



GEFS Week-1 200-hPa Divergence and Wind Anom
Valid: 20210910 - 20210916

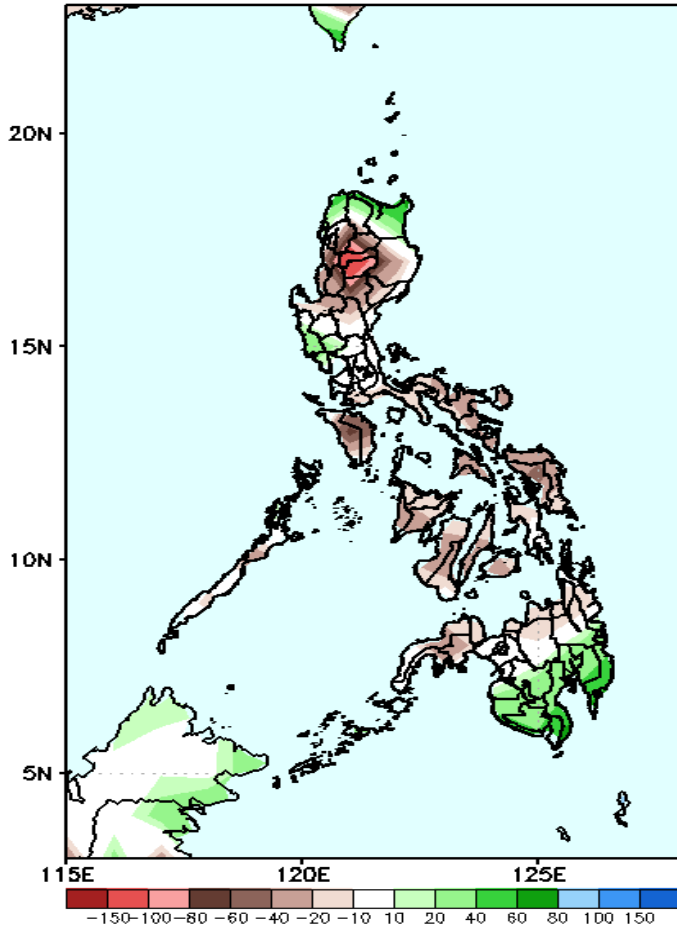


Upper and low level Divergence suggest likelihood of precipitation in most parts of Luzon, MIMAROPA, Panay island and most parts of Central and Eastern Mindanao. Southwest monsoon affecting the western sections of Luzon and Visayas. Easterlies affecting the remaining parts of the country during the forecast period.

Precipitation Anomaly and Exceedance Probability > 25/50 mm

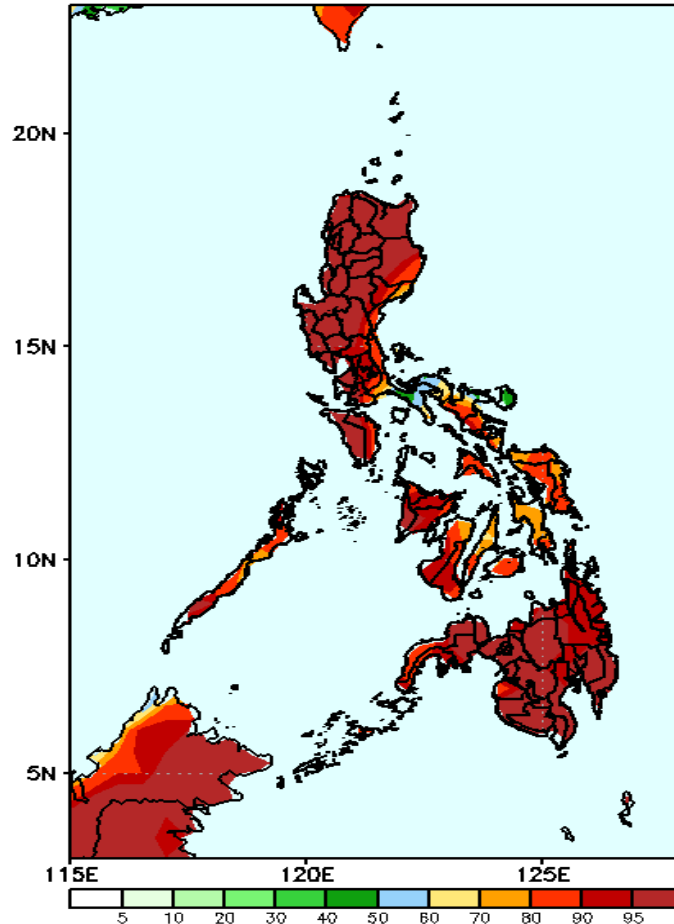
Week 1: Sep 10-18, 2021

GEFS Week-1 Precip Anomaly
Valid: 20210910 - 20210916



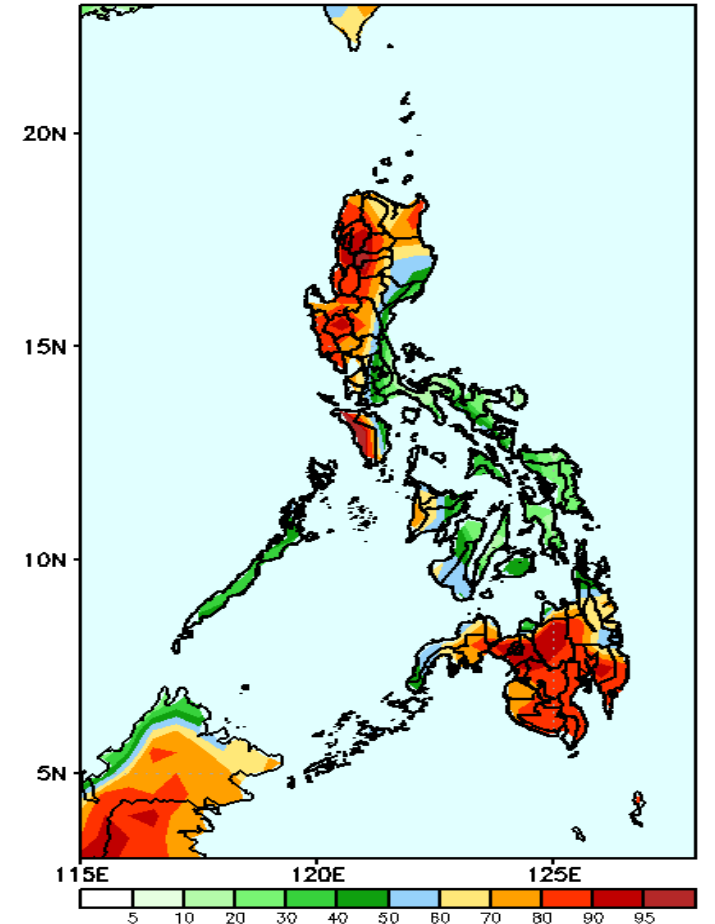
Rainfall deficit of up to 150mm is expected in Cordillera Region and 40-80mm in most parts of the country except in Ilocos Norte, Apayao, Cagayan, Zambales, Pampanga and southern Mindanao where there is 40-80mm increase of rainfall during the forecast period.

GEFS Week-1 Exceedance Prob. > 25mm
Valid: 20210910 - 20210916



High probability of rainfall to exceed 25mm in most parts of the country is expected during the forecast period.

GEFS Week-1 Exceedance Prob. > 50mm
Valid: 20210910 - 20210916

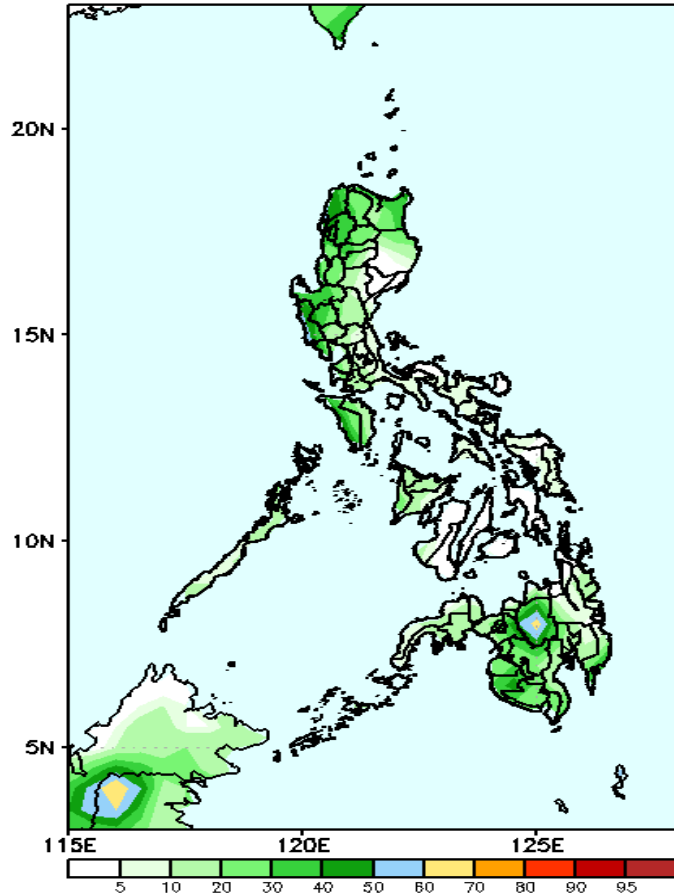


High probability of rainfall to exceed 50mm in most parts of Luzon & Mindanao while less likely in Visayas (except Aklan & Antique) during the forecast period.

Exceedance Probability > 100/150/200 mm

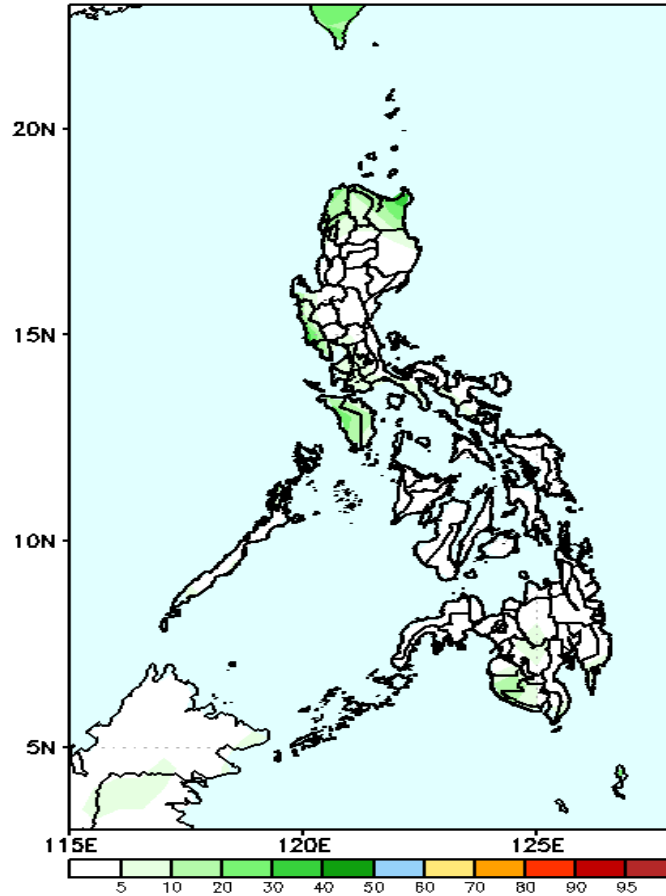
Week 1: Sep 10-18, 2021

GEFS Week-1 Exceedance Prob. > 100mm
Valid: 20210910 - 20210916



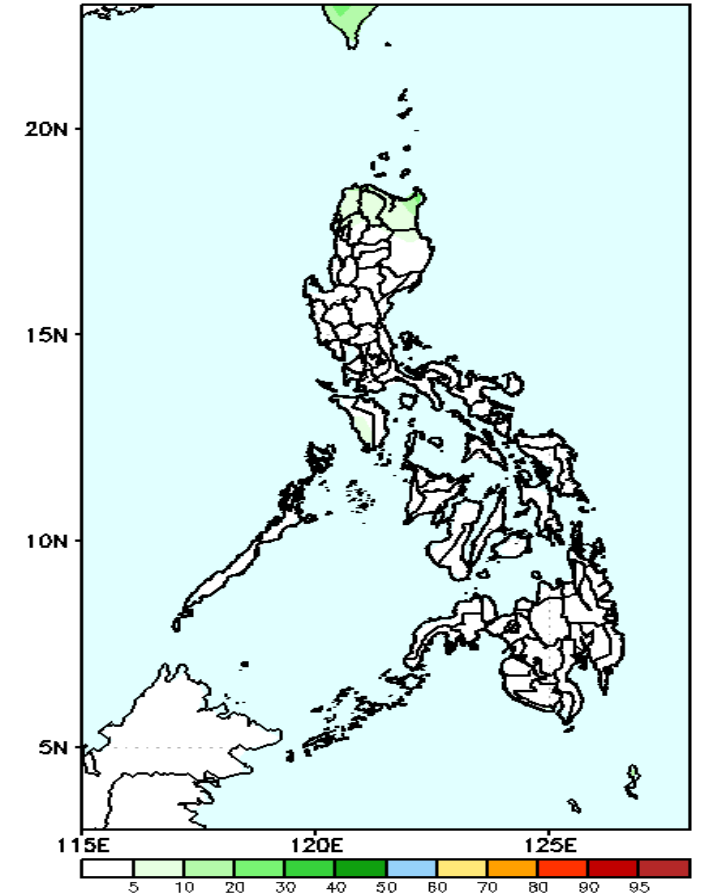
Less probability of rainfall to exceed 100mm in most parts of the country is expected during the forecast period.

GEFS Week-1 Exceedance Prob. > 150mm
Valid: 20210910 - 20210916



Less probability of rainfall to exceed 150mm in most parts of the country is expected during the forecast period.

GEFS Week-1 Exceedance Prob. > 200mm
Valid: 20210910 - 20210916



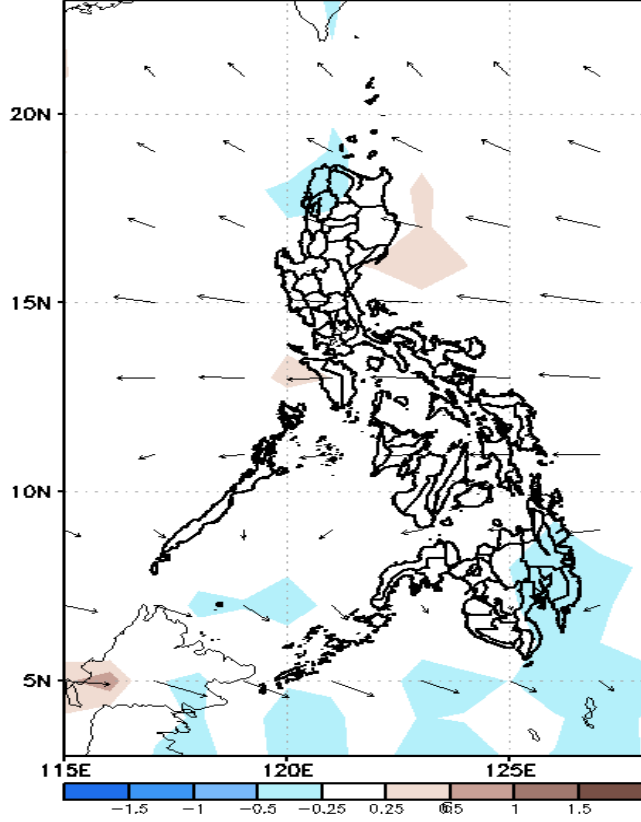
Less probability of rainfall to exceed 200mm in most parts of the country is expected during the forecast period.



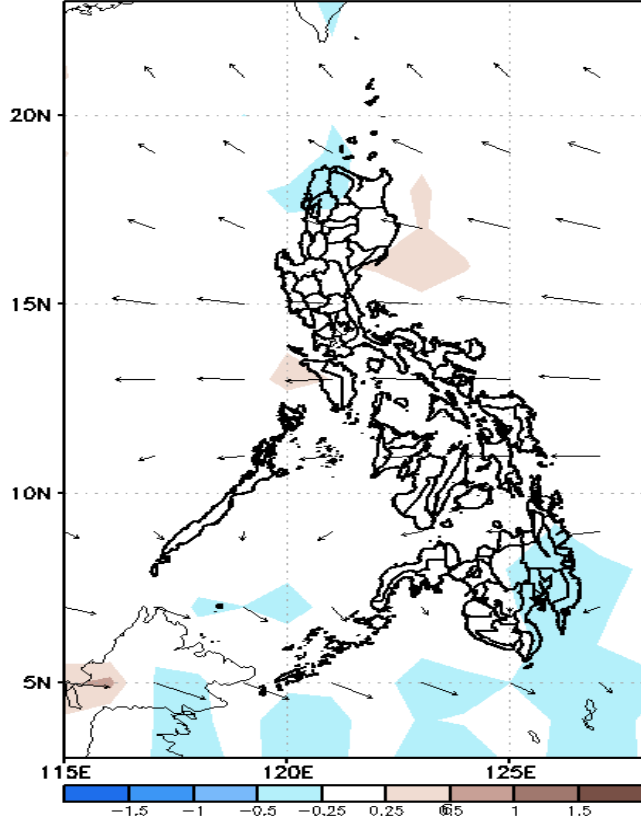
GEFS Week-2 Forecasts: Divergence & Wind Anomaly

Week 2: Sep 17-23, 2021

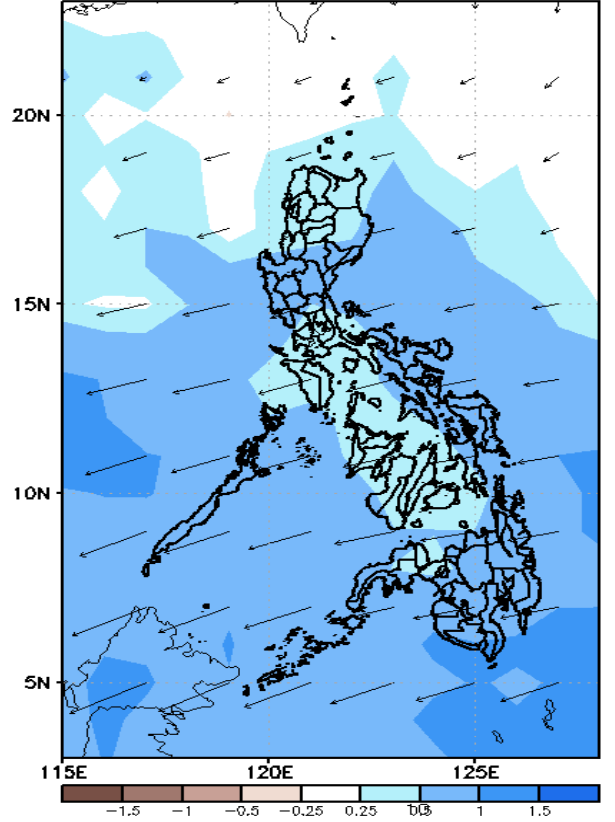
GEFS Week-2 850-hPa Divergence and Wind Anom
Valid: 20210917 - 20210923



GEFS Week-2 700-hPa Divergence and Wind Anom
Valid: 20210917 - 20210923



GEFS week-2 200-hPa Divergence and Wind Anom
Valid: 20210917 - 20210923

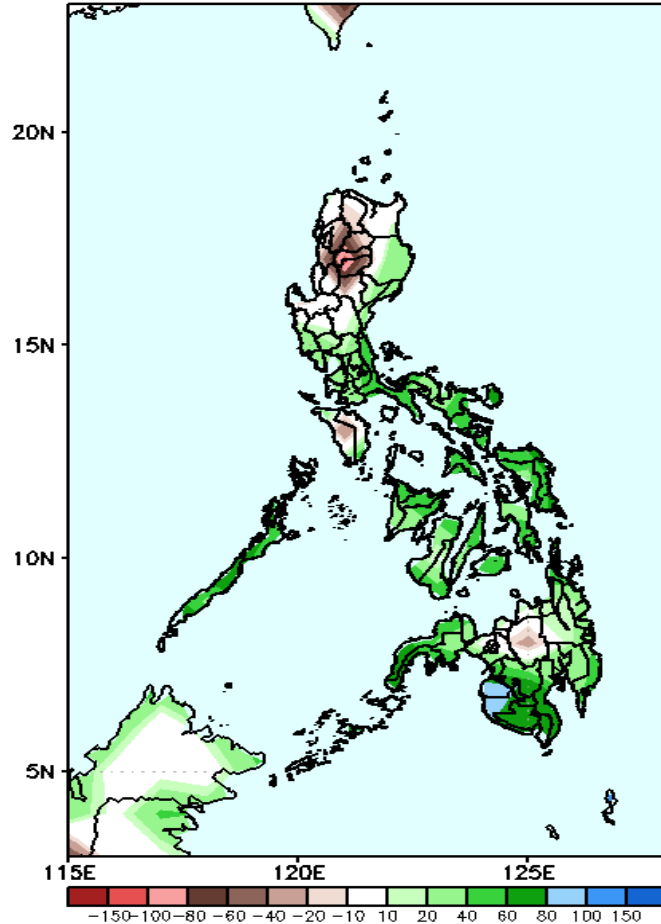


Upper and low level Divergence suggest likelihood of precipitation in most parts of the country. Easterlies affecting the remaining parts of the country attributing to light and moderate rains during the forecast period

Precipitation Anomaly and Exceedance Probability > 25/50 mm

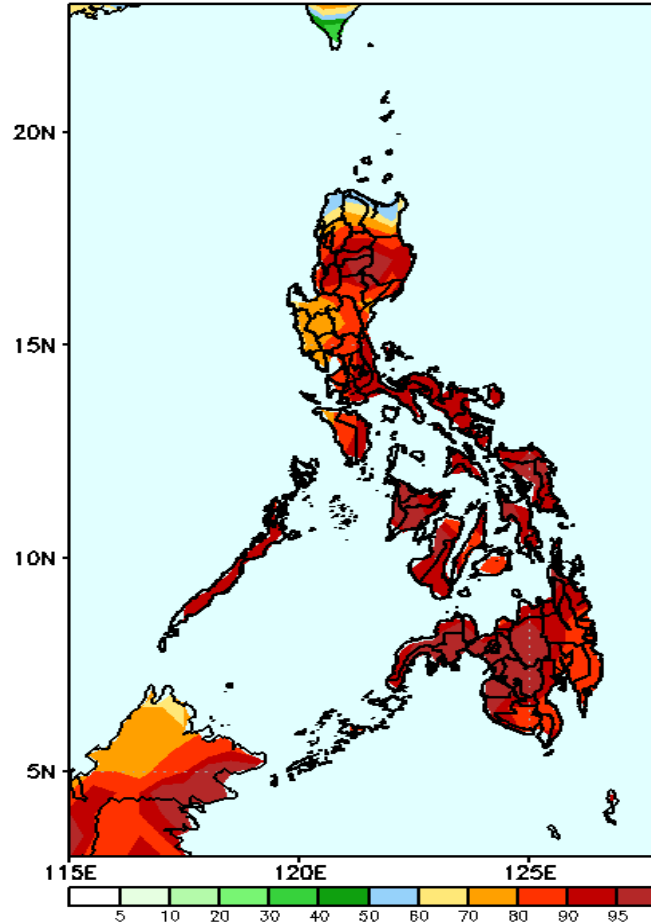
Week 2: Sep 17-23, 2021

GEFS Week-2 Precip Anomaly
Valid: 20210917 - 20210923



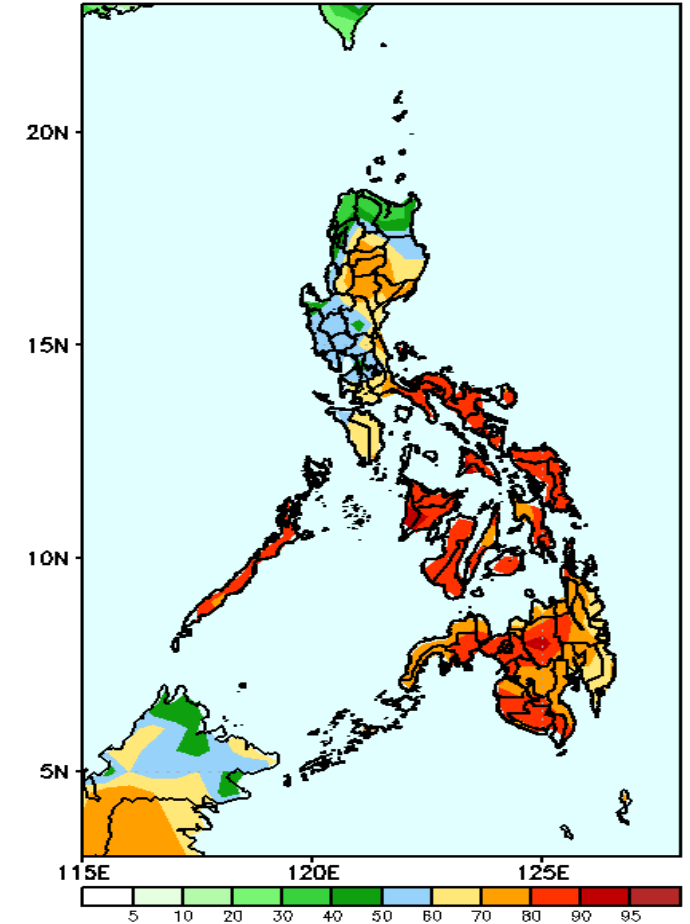
Increase of rainfall of 60-100mm is expected in most parts of the country except in Cordillera Region where 40-100mm rainfall deficit during the forecast period.

GEFS Week-2 Exceedance Prob. > 25mm
Valid: 20210917 - 20210923



High probability of rainfall to exceed 25mm in most parts of the country is expected during the forecast period

GEFS Week-2 Exceedance Prob. > 50mm
Valid: 20210917 - 20210923

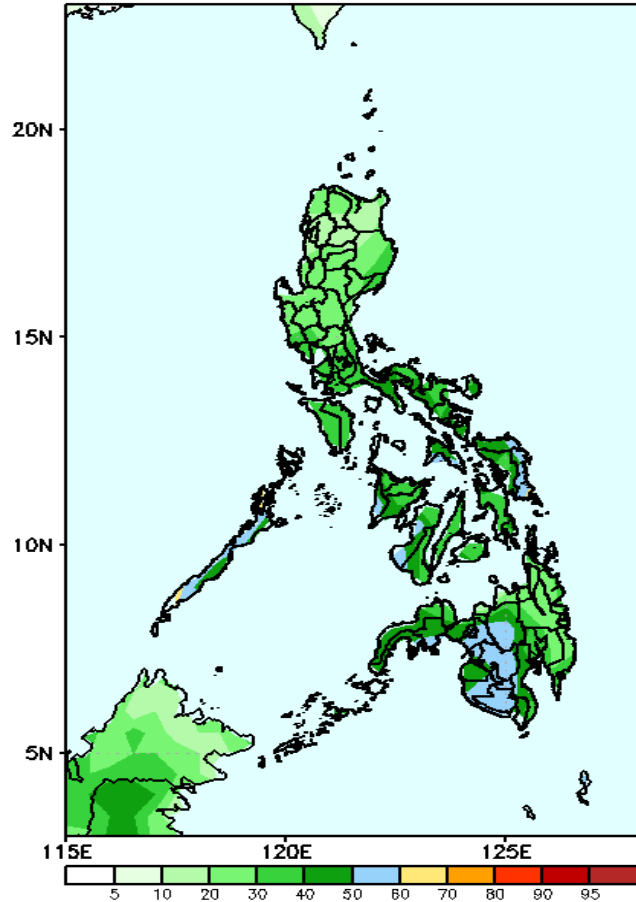


High probability of rainfall to exceed 50mm in most parts of the country except in Ilocos Norte, Apayao & Cagayan during the forecast period.

Exceedance Probability > 100/150/200 mm

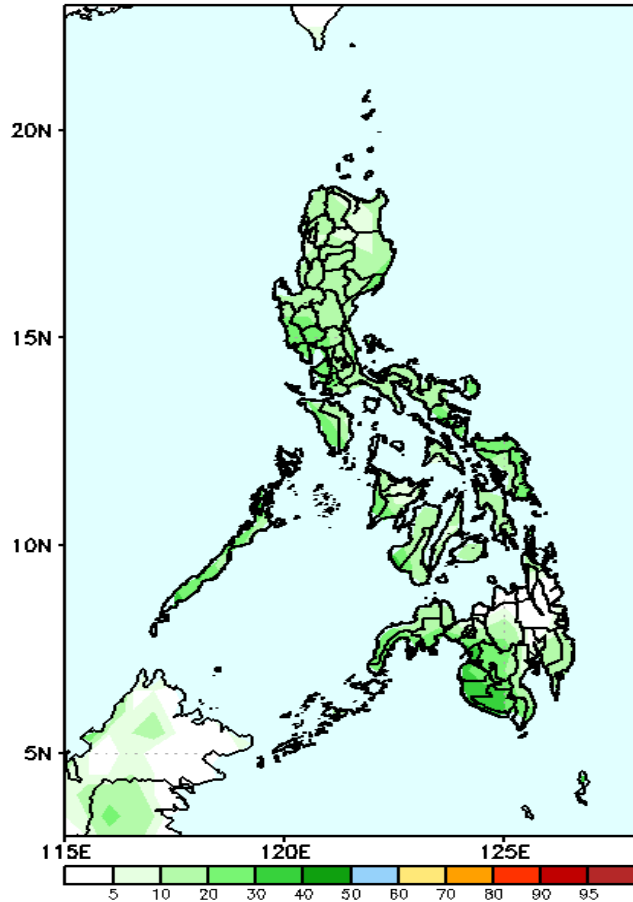
Week 2: Sep 17-23, 2021

GEFS Week-2 Exceedance Prob. > 100mm
Valid: 20210917 - 20210923



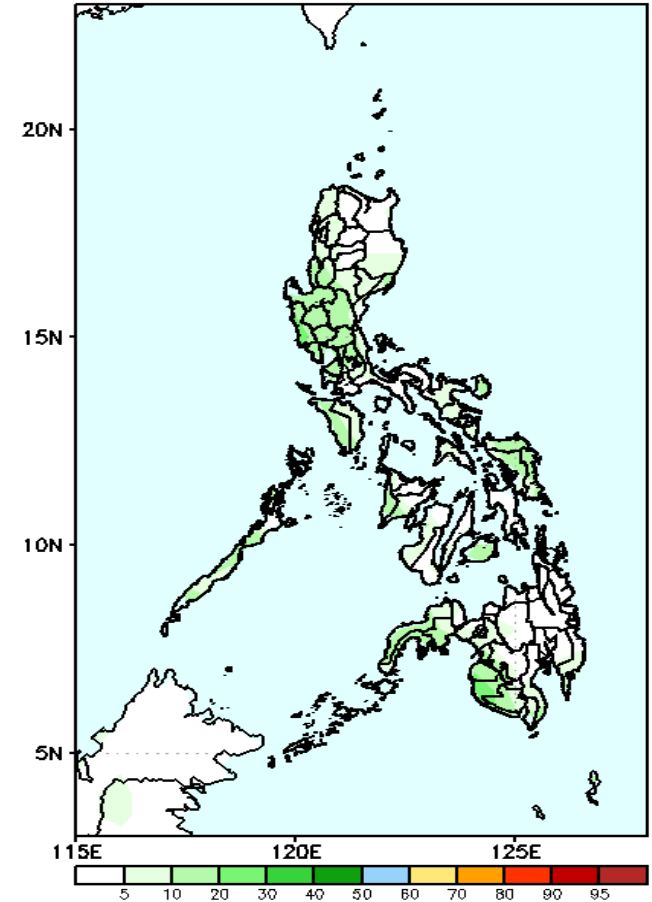
Less probability of rainfall to exceed 100mm in most parts of the country is expected during the forecast period.

GEFS Week-2 Exceedance Prob. > 150mm
Valid: 20210917 - 20210923



Less probability of rainfall to exceed 150mm in most parts of the country is expected during the forecast period.

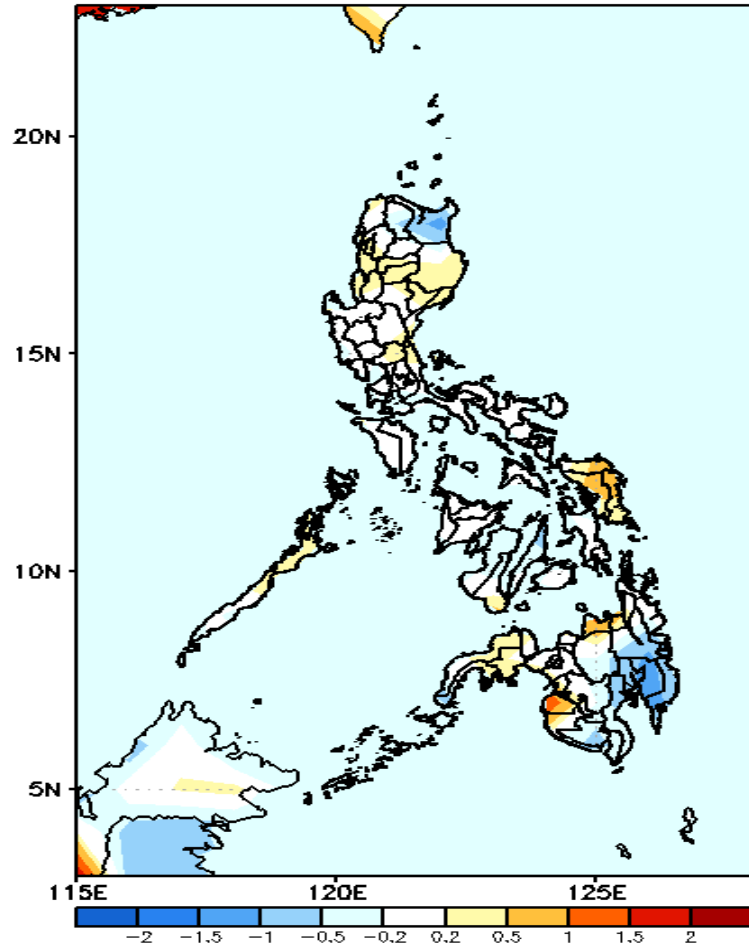
GEFS Week-2 Exceedance Prob. > 200mm
Valid: 20210917 - 20210923



Less probability of rainfall to exceed 200mm in most parts of the country is expected during the forecast period.

GEFS Week-1 & 2 Forecasts: T2m Anomaly

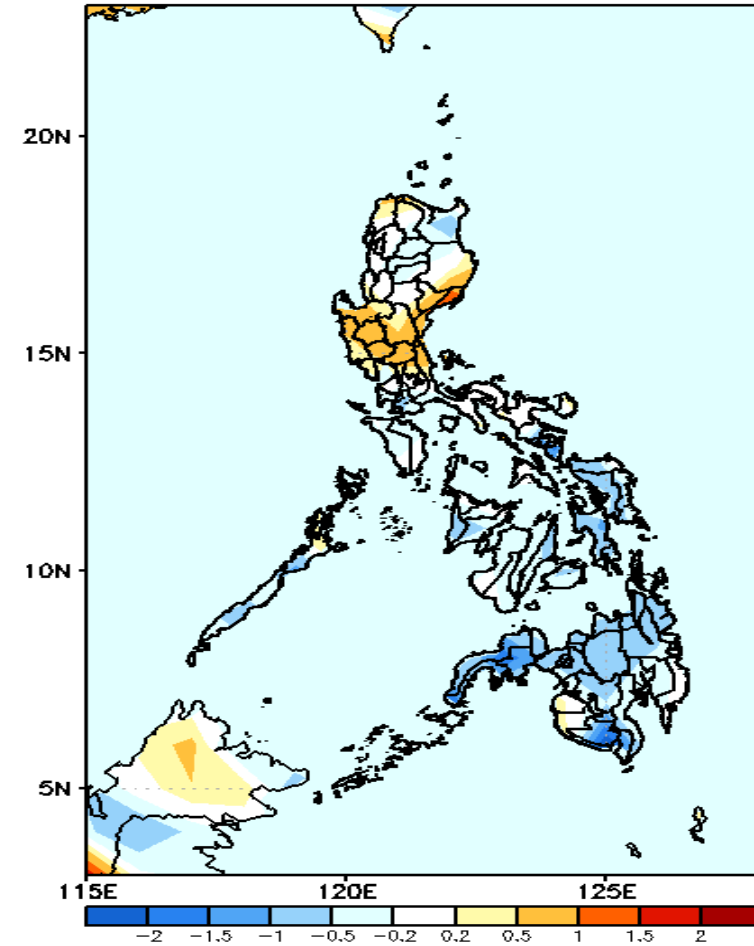
GEFS Week-1 T2m Anomaly
Valid: 20210910 - 20210916



2m Temperature Week 1: Sep 10-18, 2021

Average to slightly warmer than average surface air temperature will likely experience in most parts of the country except in Cagayan & Davao Region where cooler than average temperature is expected.

GEFS Week-2 T2m Anomaly
Valid: 20210917 - 20210923



2m Temperature Week 2: Sep 17-23, 2021

Average to slightly cooler than average surface air temperature will likely experience in most parts of the country except in Central Luzon, Quirino and eastern Isabela where slightly warmer temperature is expected.